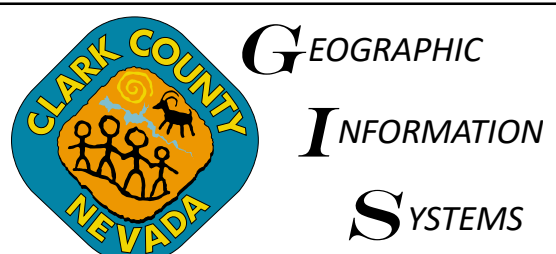
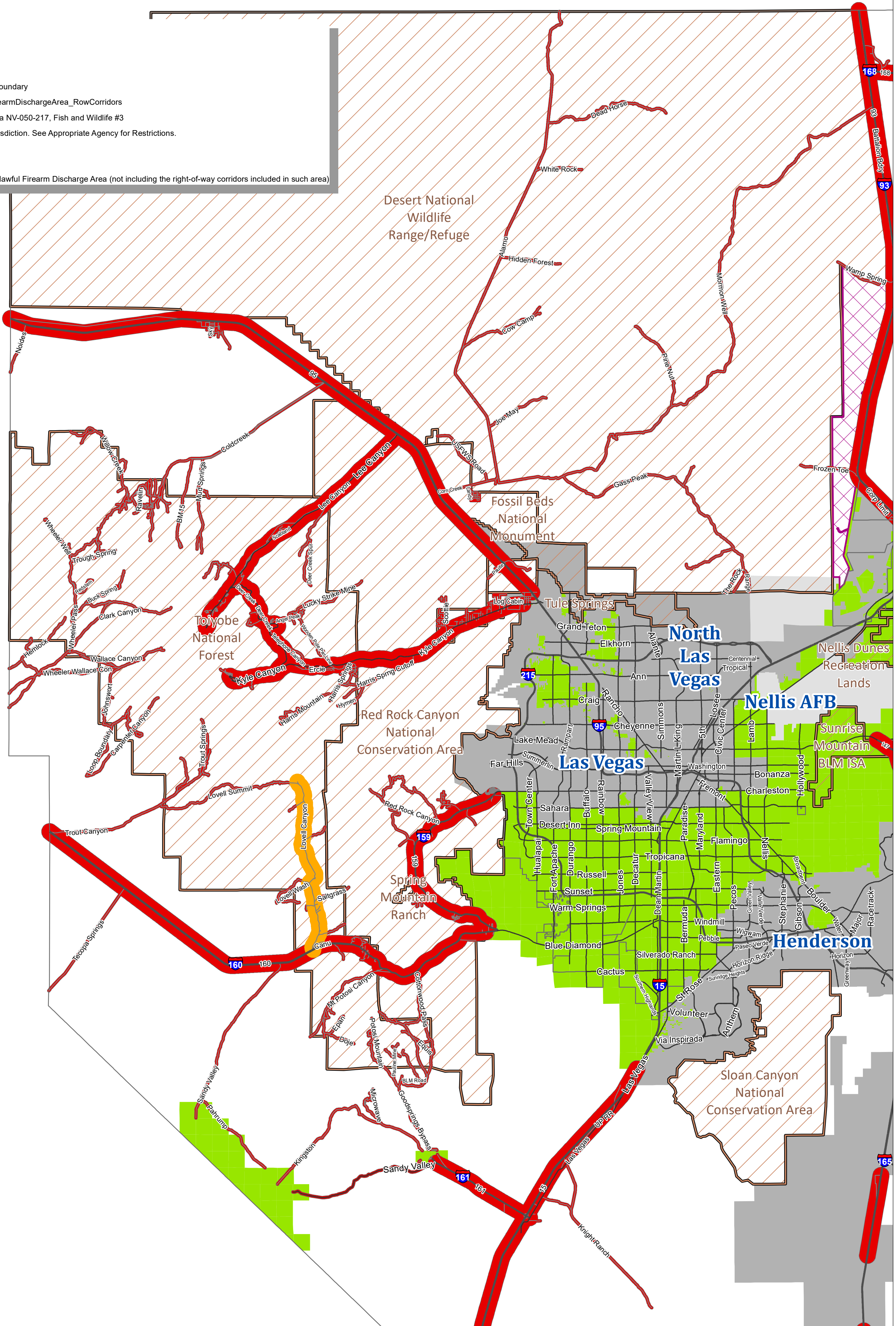
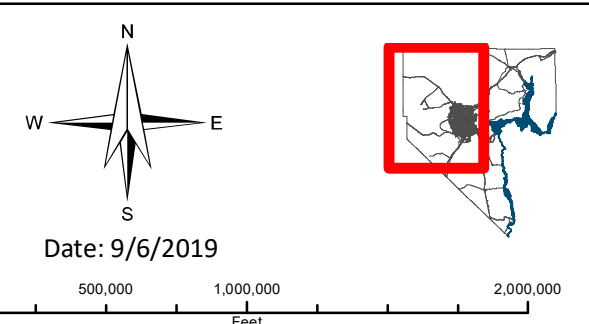


- Highway
- Major Street
- Streets
- County Boundary
- Lovell Canyon Proposed Boundary
- prdgis.GISMO.UnlawfulFirearmDischargeArea_RowCorridors
- ▨ BLM Wilderness Study Area NV-050-217, Fish and Wildlife #3
- Under Federal or other Jurisdiction. See Appropriate Agency for Restrictions.
- Incorporated Cities
- Nellis Air Force Base
- Clark County Portion of Unlawful Firearm Discharge Area (not including the right-of-way corridors included in such area)



Unlawful Firearms Discharge Area with Right-of-Way Corridors and Proposed Areas



This information is for display purposes only. No liability is assumed as to the accuracy of the data delineated herein.